



# The Ideal Location

## For Events, Conferencing, Presentations & Exhibitions

The Bower Hotel was once the home of the area's most famous family. Over the years the original character and charm of this lovely old house has been maintained.

Our suites cater for 2-200 people depending on your requirements. And alongside our 72 bedrooms and executive rooms (all with en-suite facilities, remote control digital TV, radio, direct dial telephone, trouser press, hairdryer, hospitality tray and iron & ironing board) provide the ideal base for a conference or meeting whether it is on a single day or residential basis.

## Total Academy

A self contained conference Suite comprises two separate meeting rooms, The Shakespeare Suite and The Bronte Suite with their own reception area. There is also an enclosed garden for a break out area. The centre offers maximum privacy to delegates, whilst the Total academy is self contained it still enjoys all the benefits of holding an event in an established Hotel.

The elegant Restaurant offers a range of superbly prepared and presented dishes all based on good local produce, or, if you prefer, try our exciting Lounge menu

## Other Facilities

Large Free Car Park

Situated right on the M60, Junction 21

15 Minutes from Manchester Airport

Manchester City Centre 3 Miles - 10 minutes drive

Oldham Town Centre 4 Miles - 15 minutes drive

**Conference Packages**  
**at**  
**The Bower Hotel**  
**DAY DELEGATE PACKAGES**

**Example**

**£40.00 Inc VAT**

**Coffee, Tea & Bacon Rolls on arrival**  
**Coffee, Tea and Pastries mid morning**  
**Two Course Hot & Cold Buffet Lunch served in the Restaurant with**  
**Fresh Orange Juice & Iced Water & Dessert or Fresh Fruit,**  
**Tea or Coffee**  
**Main Conference Room Hire**  
**Tea, Coffee & A Selection of Homemade cake mid afternoon**

**\*We can tailor make a package to suit your requirements and budget**  
**- please ask for an alternative package**

**All Conference rooms have Still & Sparkling Mineral Water,**  
**Cordials, Boiled Sweets, Conference Paper & Pen, Flipchart & Pens,**  
**LCD Projector & Screen come as standard for all packages. There is**  
**also a direct dial telephone (calls will be charged for as used)**

**All Lunches will be taken in the relaxed environment of the**  
**Restaurant to enable us to service your Conference room for your**  
**comfort.**

**If preferred, a Working Finger Buffet or Sandwich Lunch can be**  
**served in your room.**

# Tailor Made Packages

THE BOWER HOTEL ROOM HIRE RATES INCLUDE UNLIMITED TEA,  
COFFEE & BISCUITS PER DELEGATE

NUMBER OF DELEGATES	FULL DAY	HALF DAY	EVENING*
120 - 200	£700	£400	£325
70 - 120	£500	£350	£250
40 - 70	£400	£275	£200
16 - 40	£250	£175	£175
2 - 16	£175	£125	£125

\* After 6.30pm

Rooms used for Syndicates are charged as follows:  
£150 for the full day

## 24 HOUR RATES from £110.00 Inc VAT

The 24-Hour Rate at the Bower includes the full Day Delegate Package, Overnight Accommodation in one of our comfortable Bedrooms, Dinner in the Restaurant & Full English breakfast.

Please note all rates are negotiable dependent on date, availability & demand.

## ADDITIONAL EQUIPMENT HIRE PRICES

TV - £25.00

DVD Player - £25.00

Flipchart - £7.50

Screen - £20.00

PowerPoint LCD Projector - £50.00

Column Lectern - £20.00

Lap Top - £75.00

## FOOD EXTRAS

Tea, Coffee & Bacon Rolls - £3.95

Tea, Coffee & Biscuits - £1.95

Tea, Coffee & Danish Pastries - £3.50

Tea, Coffee & Cakes - £3.75

Tea, Coffee & Muffins - £3.75

Mineral Water - £3.60 per bottle

Jug of Fresh Orange - £5.50

Sandwich Lunch - £5.50

Finger Buffet Lunch - £9.95

One Course Lunch - £9.95

Two Course Lunch - £12.50

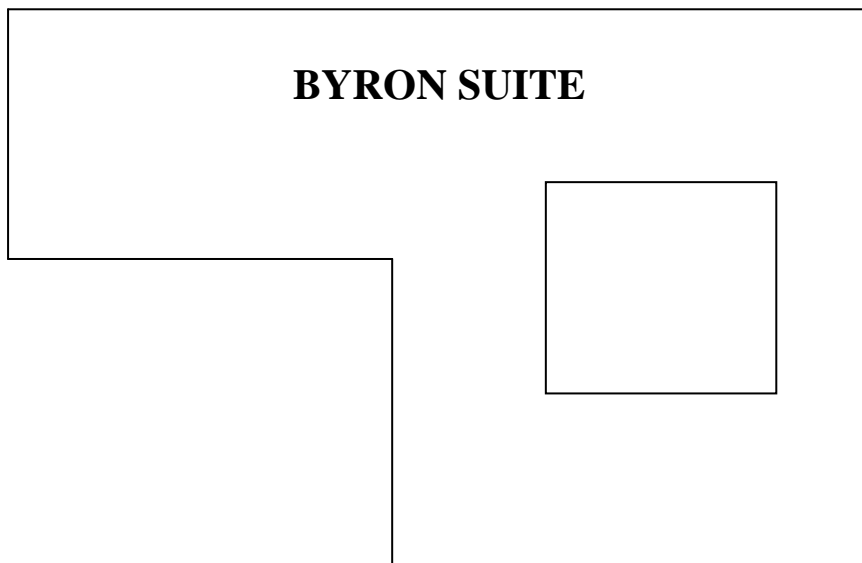
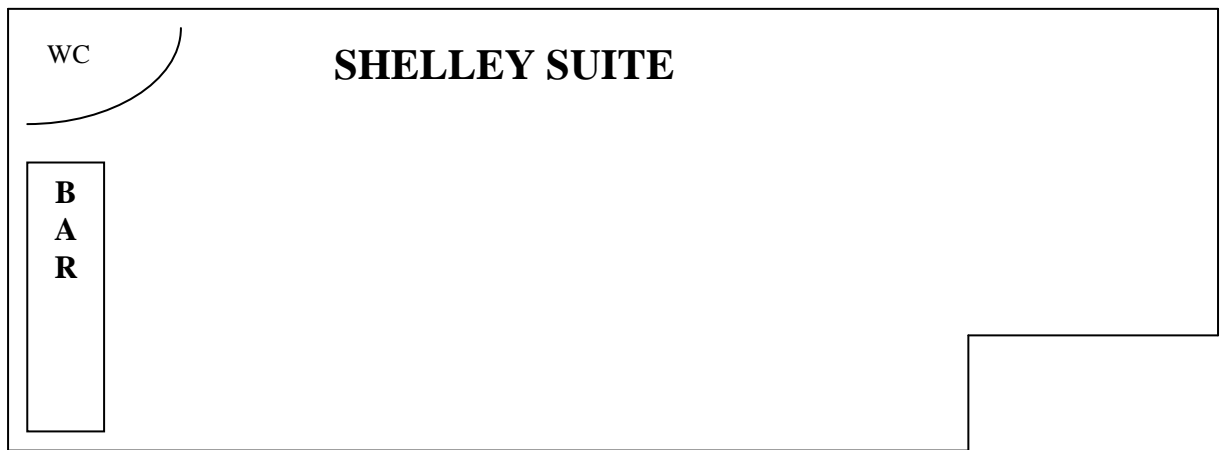
# Conference Room Capacities & Facilities

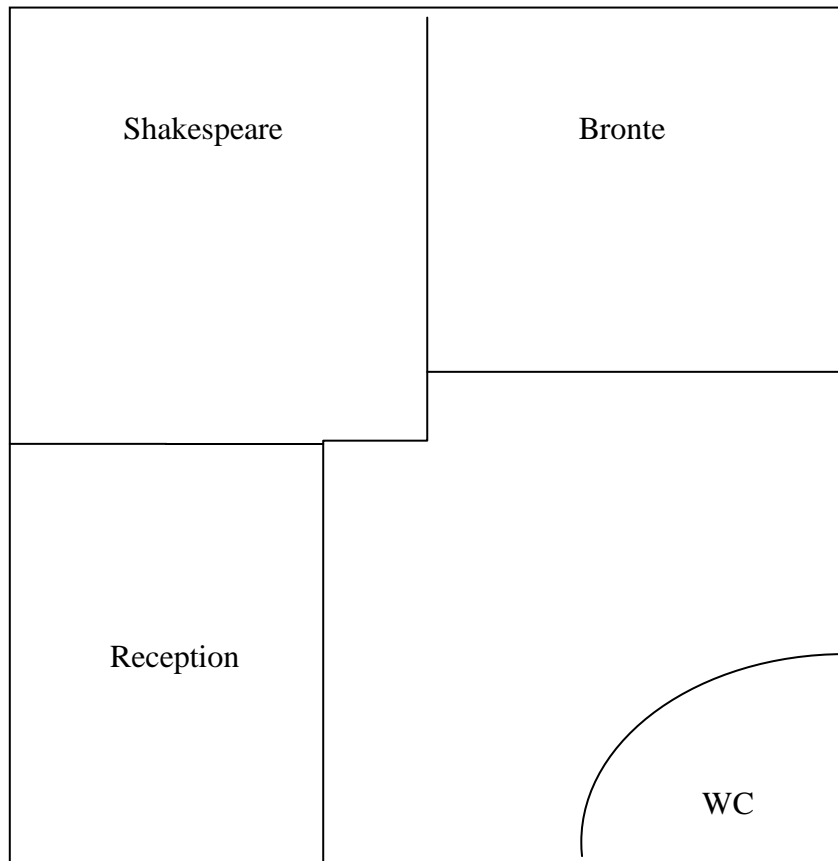
All rooms have:

- Blackout Facility
- Natural Daylight
- Direct Dial Telephones
- Fitted Screens
- Variable Light Controls

We can also arrange for any special equipment to be hired  
Internet access is available, Fax and Photocopying facilities.

The Shelley Suite & Conference Centre has a direct enclosed Garden for Breakout area

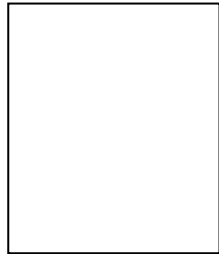




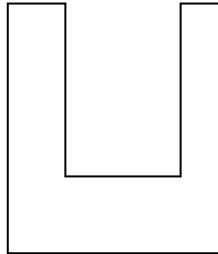
**ROOM DIMENSIONS**

<b>ROOM</b>	<b>LENGTH (m)</b>	<b>WIDTH (m)</b>	<b>HEIGHT (m)</b>
<b>Shelley</b>	<b>20</b>	<b>10.4</b>	<b>3.3</b>
<b>Byron</b>	<b>9.8</b>	<b>9.8</b>	<b>3.3</b>
<b>Shakespeare</b>	<b>7</b>	<b>3.8</b>	<b>2.4</b>
<b>Bronte</b>	<b>6</b>	<b>3.9</b>	<b>2.4</b>

# The Bower Hotel Room Capacities



**BOARDROOM**



**U-SHAPE**

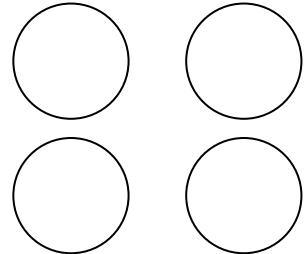
XXXX XXXX

XXXX XXXX

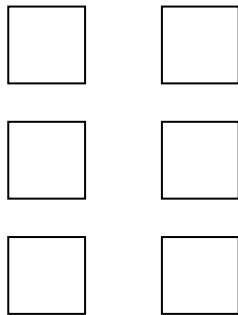
XXXX XXXX

XXXX XXXX

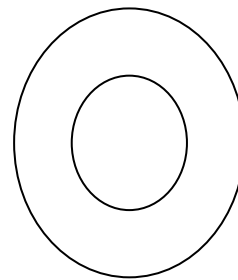
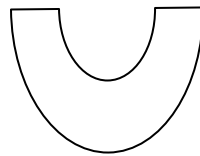
**THEATRE STYLE**



**CABARET**



**CLASSROOM**



**HORSESHOE / CIRCLE OF CHAIRS**

<b>ROOM</b>	<b>BOARD-ROOM</b>	<b>U-SHAPE</b>	<b>THEATRE</b>	<b>CABARET</b>
<b>Shelley Suite</b>	<b>60/80</b>	<b>60</b>	<b>220</b>	<b>125</b>
<b>Byron Suite</b>	<b>40</b>	<b>30</b>	<b>80</b>	<b>50</b>
<b>Bronte Suite</b>	<b>14</b>	<b>14</b>	<b>16</b>	<b>/</b>
<b>Shakespeare Suite</b>	<b>12</b>	<b>10</b>	<b>/</b>	<b>/</b>